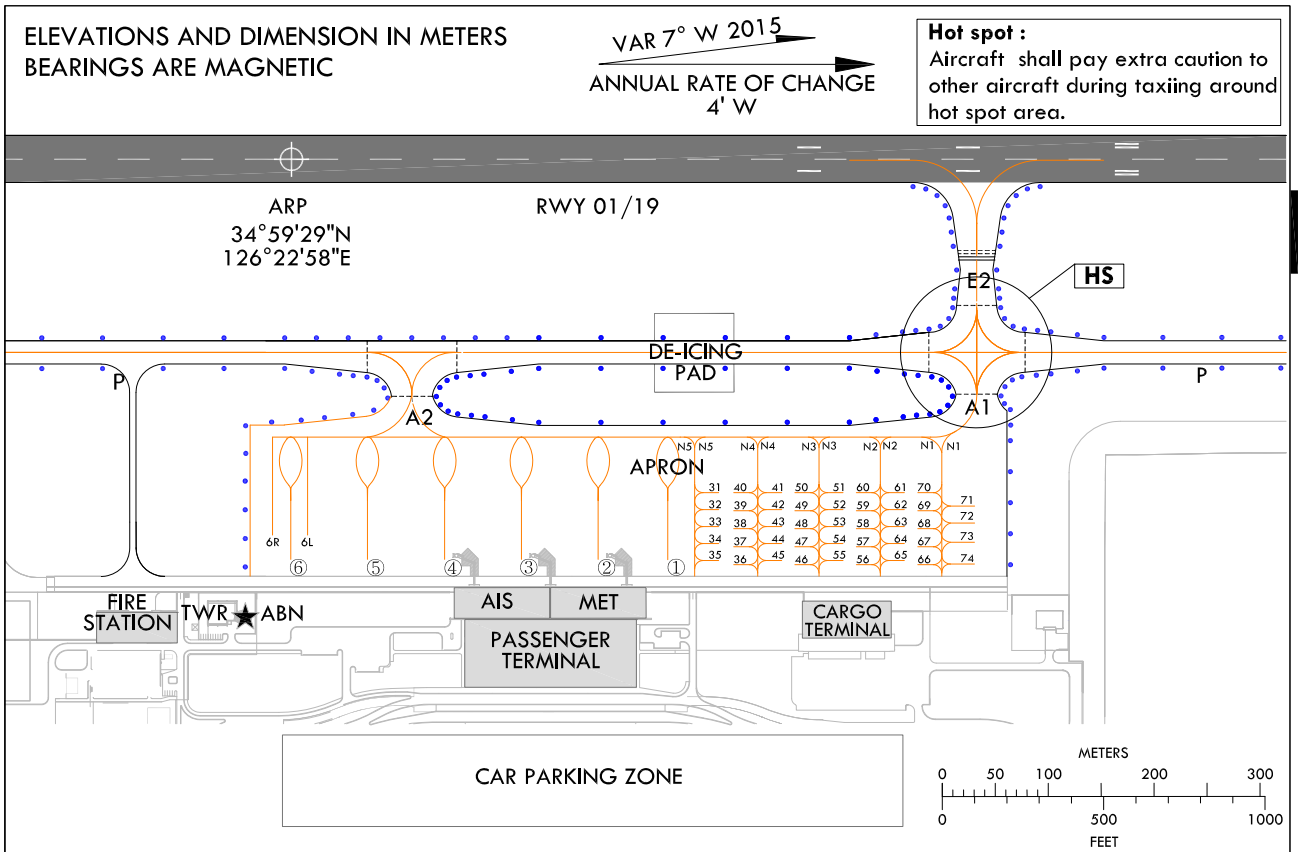


**AIRCRAFT PARKING /  
DOCKING CHART - ICAO**

APRON ELEV 12 m

TWR 118.25 118.85 321.025  
GND 121.7 317.45

**MUAN / Muan Intl**



STANDS NR	INS COORDINATES FOR AIRCRAFT STANDS(WGS-84)	ELEV (AMSL)
1	34°59'40.27"N 126°23'13.01"E	11.82
2	34°59'38.53"N 126°23'12.97"E	11.54
3	34°59'36.18"N 126°23'12.99"E	11.53
4	34°59'33.83"N 126°23'13.00"E	11.44
5	34°59'31.47"N 126°23'13.03"E	11.42
6	34°59'29.12"N 126°23'13.05"E	11.22
6L	34°59'29.64"N 126°23'11.86"E	11.02
6R	34°59'28.57"N 126°23'11.87"E	10.95
31	34°59'42.13"N 126°23'10.51"E	11.68
32	34°59'42.13"N 126°23'11.14"E	11.65
33	34°59'42.13"N 126°23'11.77"E	11.74
34	34°59'42.14"N 126°23'12.40"E	11.81
35	34°59'42.14"N 126°23'13.03"E	11.89
36	34°59'42.57"N 126°23'13.19"E	11.93
37	34°59'42.57"N 126°23'12.52"E	11.85
38	34°59'42.56"N 126°23'11.85"E	11.76
39	34°59'42.56"N 126°23'11.18"E	11.67
40	34°59'42.56"N 126°23'10.51"E	11.70
41	34°59'44.03"N 126°23'10.49"E	11.78
42	34°59'44.03"N 126°23'11.13"E	11.72
43	34°59'44.04"N 126°23'11.76"E	11.80
44	34°59'44.04"N 126°23'12.39"E	11.88
45	34°59'44.04"N 126°23'13.02"E	11.95
46	34°59'44.47"N 126°23'13.17"E	11.97
47	34°59'44.46"N 126°23'12.49"E	11.89
48	34°59'44.46"N 126°23'11.83"E	11.80
49	34°59'44.46"N 126°23'11.16"E	11.73
50	34°59'44.45"N 126°23'10.48"E	11.79
51	34°59'45.93"N 126°23'10.47"E	11.88
52	34°59'45.93"N 126°23'11.10"E	11.82
53	34°59'45.93"N 126°23'11.74"E	11.87

STANDS NR	INS COORDINATES FOR AIRCRAFT STANDS(WGS-84)	ELEV (AMSL)
54	34°59'45.93"N 126°23'12.37"E	11.93
55	34°59'45.94"N 126°23'13.00"E	12.02
56	34°59'46.35"N 126°23'13.15"E	12.10
57	34°59'46.35"N 126°23'12.48"E	11.97
58	34°59'46.34"N 126°23'11.81"E	11.89
59	34°59'46.34"N 126°23'11.14"E	11.84
60	34°59'46.33"N 126°23'10.47"E	11.90
61	34°59'47.81"N 126°23'10.46"E	11.99
62	34°59'47.81"N 126°23'11.09"E	11.94
63	34°59'47.81"N 126°23'11.72"E	12.00
64	34°59'47.82"N 126°23'12.35"E	12.05
65	34°59'47.82"N 126°23'12.98"E	12.11
66	34°59'48.23"N 126°23'13.14"E	12.16
67	34°59'48.23"N 126°23'12.47"E	12.07
68	34°59'48.22"N 126°23'11.80"E	12.01
69	34°59'48.22"N 126°23'11.13"E	11.96
70	34°59'48.22"N 126°23'10.46"E	12.01
71	34°59'50.19"N 126°23'10.83"E	12.05
72	34°59'50.19"N 126°23'11.58"E	12.13
73	34°59'50.20"N 126°23'12.33"E	12.16
74	34°59'50.20"N 126°23'13.08"E	12.24

LEGEND	
•	Taxiway light
≡≡≡	Runway holding position
---	Intermediate holding position
A1	Taxi way
①	Aircraft Stand
→	Taxi routes
○-HS	Hot spot

STANDS NR	STAND AVAILABILITY
1	B737-900, A321-200
2	B767-400, B767-300
3 to 6	B747-400, B777-200
6L	ERJ - 145
6R	ERJ - 145
31 to 70	DA42, PA34
71 to 74	C208B, CARV - II

RWY	THR coordinates (WGS-84)	BEARING STRENGTH
01	34°58'44"N 126°22'58"E	PCN 78/F/C/X/T ASPHALT
19	35°00'14"N 126°22'58"E	

Taxiway width, strength and surface	TWY	WIDTH	Strength and Surface
	P	23 m	PCN 81 /R/C/W/T CONCRETE
	E1	28 m	
	E2	33 m	
	E3	28 m	
	A1	39 m	
	A2	40 m	
G	23 m	PCN 32/R/C/W/T CONCRETE	

TAXIWAY EDGE LIGHTS ON ALL TAXIWAYS.  
\*ISOLATED AREA : At the intersection of TWY E2 and TWY A1

Change : Amended coordinate format.